

Alaska Department of Fish and Game

Habitat Section
Southeast Region



114-31-10130-2022-3003-4003-5010-6032 Tributary 1

ADDITION

Water body name:

Survey date: 9/9/2021; 6/28/2022

Quad: Sitka D-5

Species & Lifestage:

Upper Reach Latitude: 57.950261 **Longitude:** -135.404689

Survey crew: RR, FC, BL, MR

Lower Reach Latitude: 57.949945 **Longitude:** -135.405293

Findings: We surveyed this uncataloged stream using a backpack electrofisher, baited minnow traps, and GPS. We captured juvenile coho salmon, Dolly Varden, and cutthroat trout. Pictures of juvenile coho salmon were not taken; however, fish identification was verified by a Habitat Biologist. The tributary stream flows through a larger arch culvert, a 3 ft wide circular culvert, and down a 2 ft tall rootwad jam (Table 1; Figures 1–3).

Recommendations: Add this uncataloged stream to the anadromous waters catalog for rearing coho salmon (Figure 4).

Nomination: Pending

Table 1.—114-31-10130-2022-3003-4003-5010-6032 tributary 1 survey data.

Waypoint	Latitude	Longitude	Notes	Stream Width ft	Stream Substrate	Habitat Features	Gradient %	Sample Effort	Sample Results
882	57.950633	-135.404084	3' CMP, rusted 1" above water line and on the outside, well-aligned with stream and good size for stream volume, 1-2" of sand and gravel in the bottom.	4-6	Small Gravel Sand		6-8	EF	3 DV
883	57.950728	-135.403280	End of upstream investigation, going to survey down for possible barriers, only resident fish caught.			SWD		EF	5 DV
884	57.950724	-135.403726	Inlet of culvert.						
885	57.950511	-135.404422	2' rootwad falls, also goes subsurface. Have not caught coho above this point.					EF	1 DV
886	57.950265	-135.404708	Rootwad falls, only resident fish caught above this point. May be a temporary barrier to juvenile fish passage.					EF	2 CO 1 CT 2 DV
2377	57.950559	-135.401164	Minnow trap set downstream of culvert. Steel oval CMP.	2-4	Small Gravel Large Gravel		1-2	MT	5 DV 2 CT



Figure 1.—Rootwad jam/falls at waypoint 886.



Figure 2.—Culvert outlet at waypoint 882.



Figure 3.—Culvert inlet at waypoint 2377.

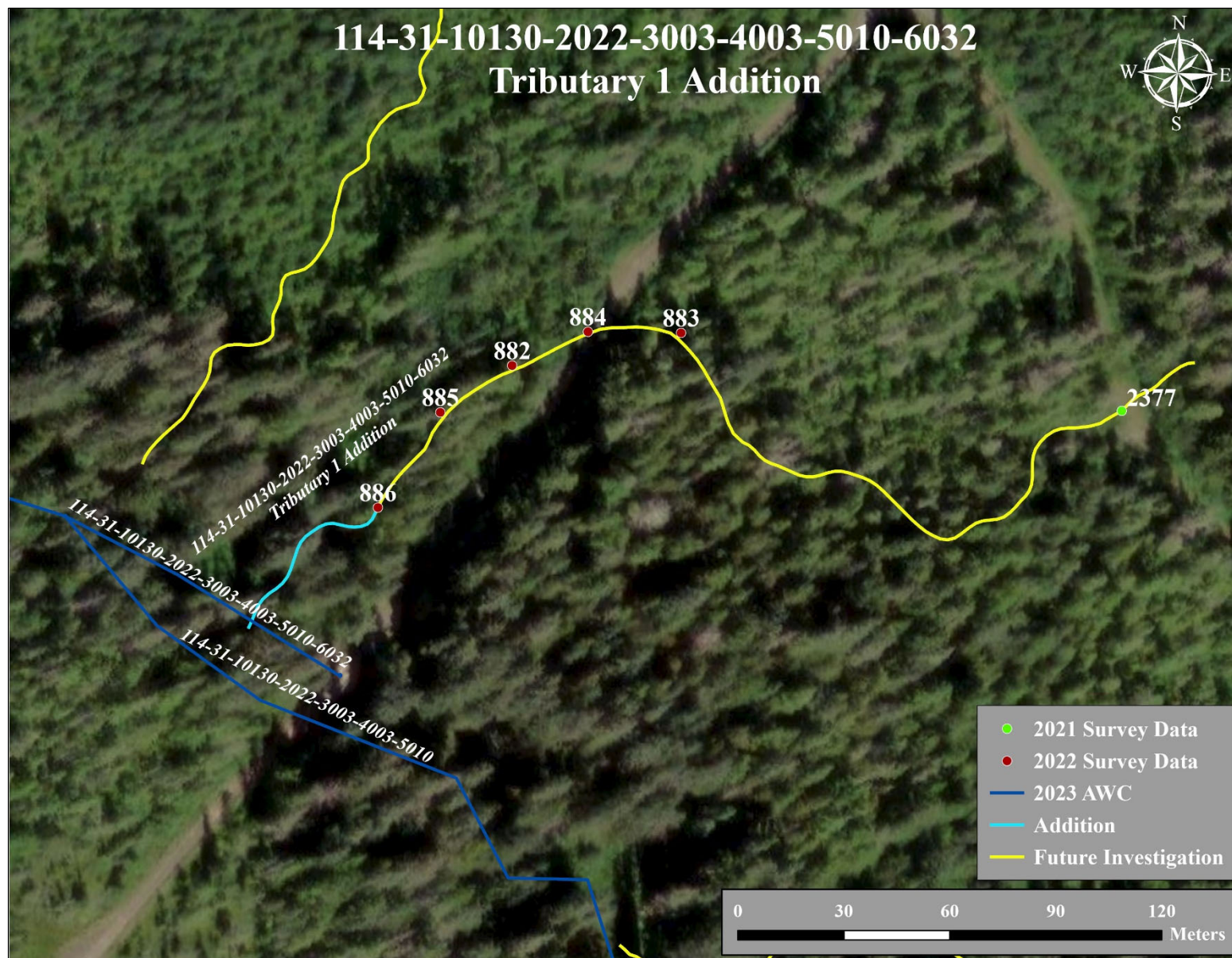


Figure 4.—114-31-10130-2022-3003-4003-5010-6032 tributary 1 addition map.